

Office of Facilities Coordination Overview of Services

Website: <http://fcor.tamu.edu/>

Mission: Facilities Coordination (FCOR) provides and analyzes facilities and land use **information to support the decision and planning processes** of Texas A&M University (TAMU) and its external constituencies.

Reference: [University Rule 41.05.02.M1](#)

Responsibilities

Building and Room inventory

- All TAMU/TAMUS components headquartered at the CS Campus and TAMU-Galveston.
 - *76% of Total TAMUS State-wide Building Inventory currently in the FCOR databases*

Graphical Database Management (GIS applications)

- **Campus Maps**
- **Building Floor Plans**
- **Web Map** as access point for Maps, floor plans and space inventory data.

Classroom & Teaching Lab Utilization

- Identified means to improve Utilization of Teaching Facilities (link to THECB's CBM-005)
- Classroom Scheduling Task Force recommendation & implementation

Land Use Coordination

- General Logistical support (*e.g. Cemetery relocation, TAMUG emergency relocation, MSC*)
- Riverside Campus Use Coordination
- University Services Building, Bush Library Event Coordination and Others
 - *Other Locations: Special events (i.e. Fireworks, BVSWMA, others)*
- Real Estate issues (i.e. Penberthy Extension, USB easement, Discovery Drive extension)

Campus Planning Efforts

- Space Needs Assessment (SNAPS) in support of the Council for the Built Environment
 - *All TAMU-CS units will be analyzed, including TAMUS Agencies*
- CBE staffing and information support (*e.g. Campus Master Plan, Faculty Reinvestment*)
- CBE: technical subcommittee (*formerly CFPC-tsc*) project proposal analysis

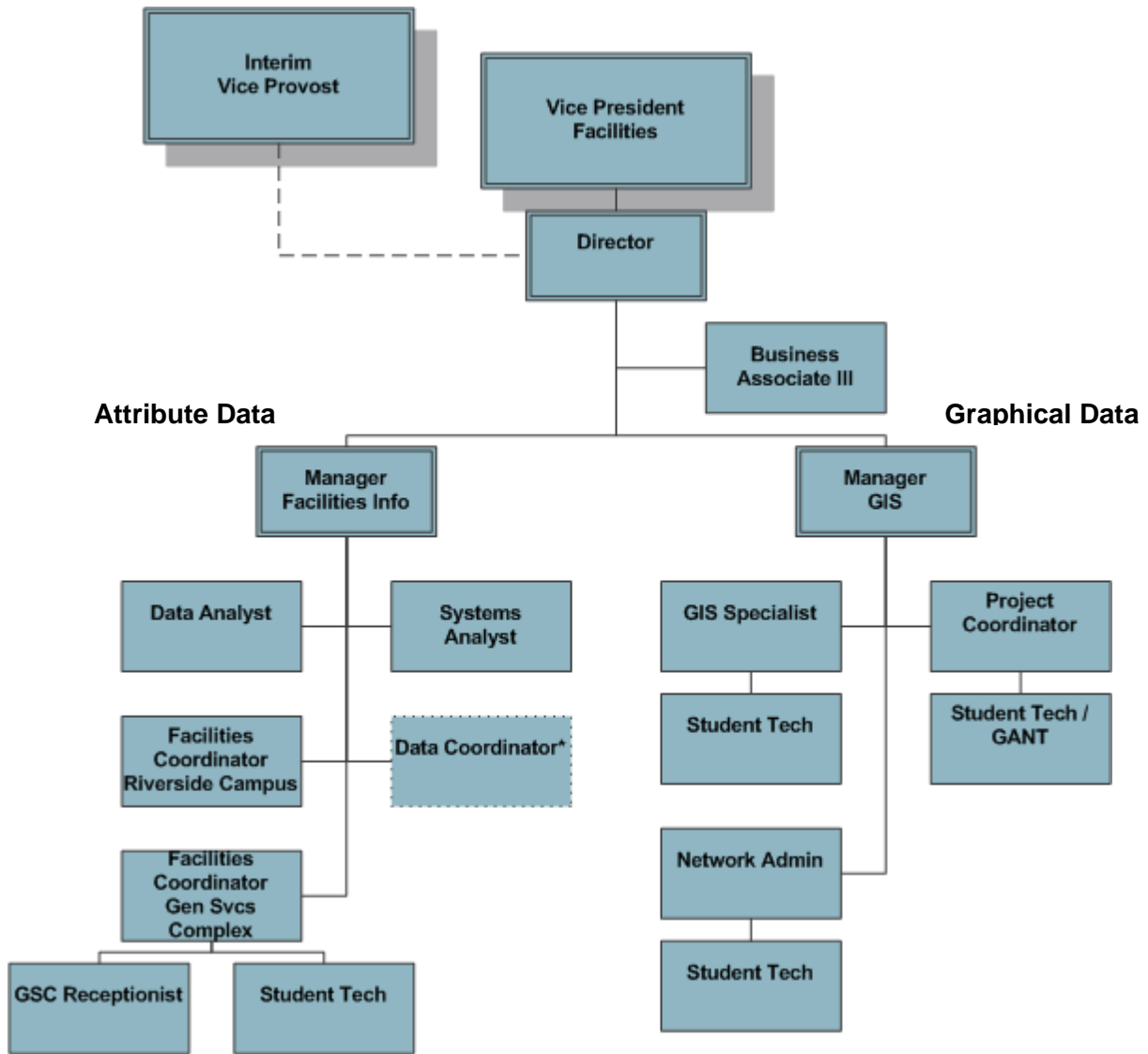
Texas Higher Education Coordinating Board (THECB)

- Liaison for data reporting, analyses and other space related regulatory requirements
- Regulatory Reports for all TAMU-CS based TAMUS components
 - *Includes: MP-1, MP-2, CBM-005, CBM-011, CBM-014, Space Projection Model data*
 - *Assist other non-TAMU-CS based components as requested.*
- Chair Committee to review for update of Facilities rules & Data Formats
 - *Implementation in progress at THECB and FCOR*
- Member of THECB Space Audit Peer Review Committee
- THECB Classroom/Teaching Laboratory Utilization Work Group and SUE report development
- Space Projection Model Review and Update (*re: basis for infrastructure funding*)

Data Access Improvements

- Campus Web Map (GIS), for the TAMU web page, Administrative Uses, & mobile applications
- Enhanced web page access to space data/information for campus users (including all databases)
- Continued to collect accurate floor plan information (*Facilities Condition Assessment Program*)
- Enrollment Management Taskforce and Enrollment Impact Analysis

**Office of Facilities Coordination
Current Organizational Chart**



Headcount

Office Operations	5	Office Management, IT, Business Operations**
Attribute Data	2	Systems Analyst and Data Analyst**
Graphical Data	2	GIS Specialist (Coordinator) and Project Coordinator**
Riverside Campus	1	Facilities Coordinator**
General Services Complex	2	Facilities Coordinator and Receptionist**
TOTAL	12	

Student Staff 7 Heavily involved in data collection (floor plans and mapping) & IT

*Data Coordinator: Pending FY 10 budget decision

**All Involved in the data collection, analysis, and reporting services of the office.